



This is one area in which graffiti was removed.

Location – Woolborough Lane Subway.

Locations –  
Fleming Way,  
Gateway 3,  
Faraday Road,  
Crompton Way,  
County Oak  
Way.



We had periods of very strong winds which affected 26 of our banners.

All these have now been repaired and replaced.

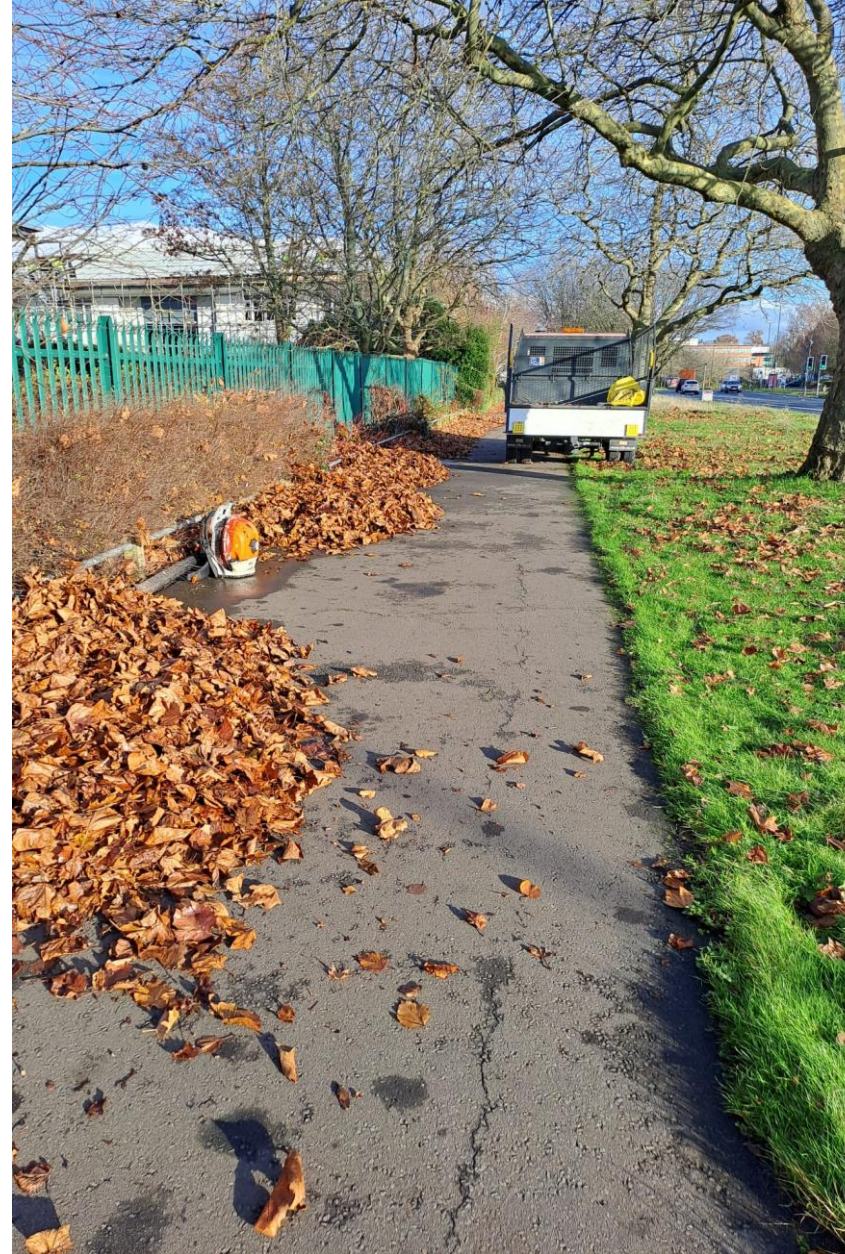
We are now going to schedule in replacing some of the worn brackets and arms to strengthen the banner to help prevent further breakages.





We have attended to the shrubs on Gateway 1 roundabout.

We will be starting to incorporate some wildflowers into small pockets to add colour and encourage wildlife.



Leaves have been cleared from various areas of Manor Royal, with 1,080kg of leaves being removed.

Location – Manor Royal Road.



Fridges and washing machine from Kelvin Way.



London Road.



Here are some of the fly tips we have received during Dec/Jan. Even a burnt-out bin which have now been cleared and reinstated.



Tinsley Lane North.



The Terrace.